



Fitting Instructions for DG0029 Downpipe Grille
KAWASAKI NINJA 125 2019-

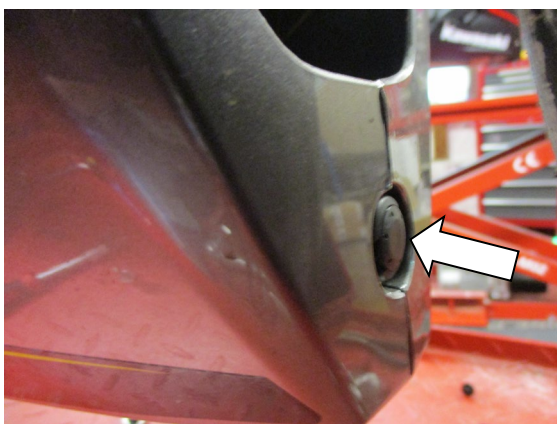


- In This Kit There Should Be**
1x Downpipe Grille (DG0029).
1x M5 x 20mm Button Head Bolt.
1x M5 Nyloc Nut.
1x M5 Washer 16mm (O/dia).
1x Location Spacer (S1115).
4x Cable Ties.

Digital copies of these instructions are available to download from www.rg-racing.com

GENERAL TORQUE SETTINGS

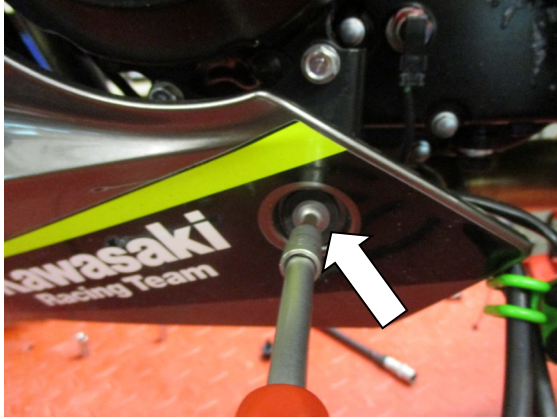
- M4 BOLT = 8Nm
M5 BOLT = 12Nm
M6 BOLT = 15Nm
M8 BOLT = 20Nm
M10 BOLT = 40Nm



Picture 1



Picture 2



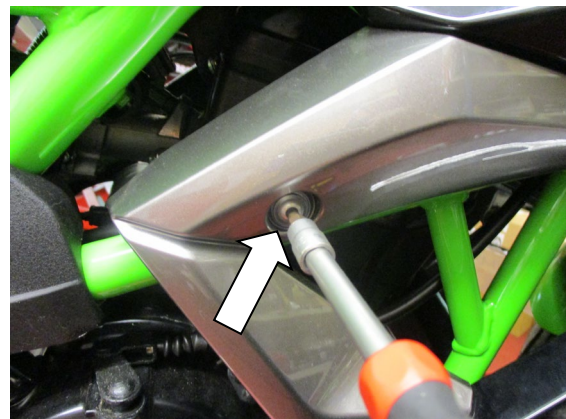
Picture 3



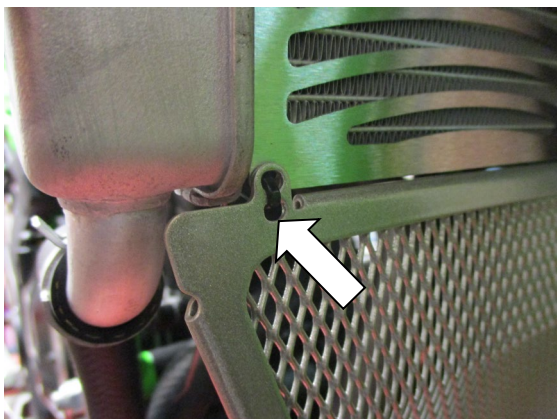
Picture 4



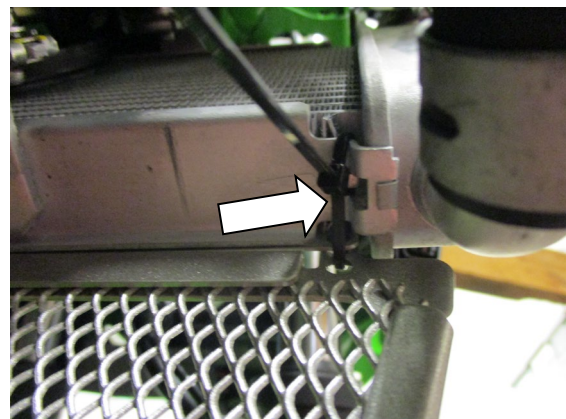
Picture 5



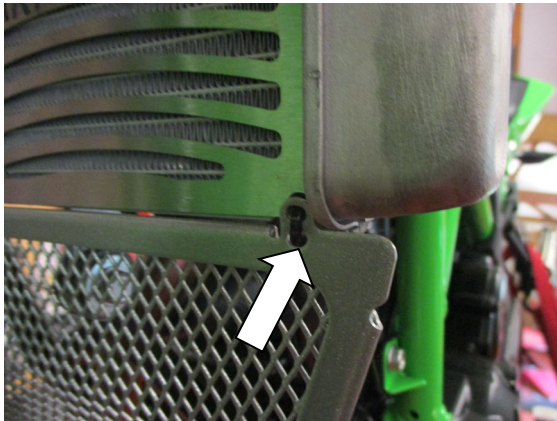
Picture 6



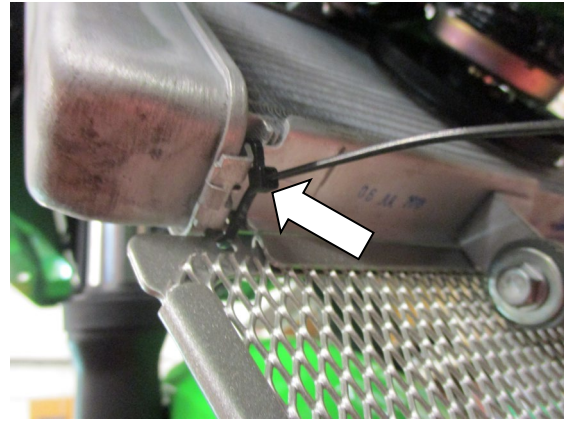
Picture 7



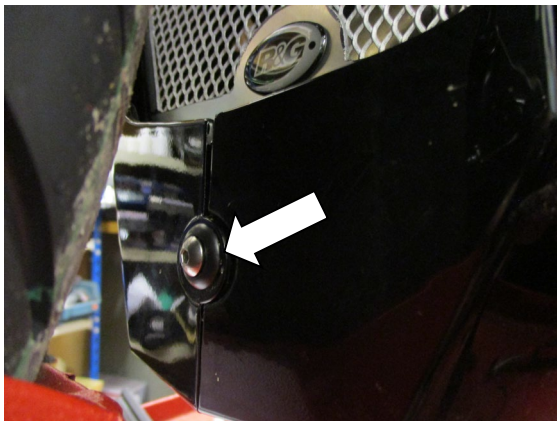
Picture 8



Picture 9



Picture 10



Picture 11



Picture 12

TOOLS REQUIRED

- Socket set to include 8mm socket & wrench.
 - 3 & 4mm A/F Allen keys.
 - Flat bladed driver.

FITTING INSTRUCTIONS

- Remove the two plastic pull rivets using a flat bladed driver as arrowed in pictures 1 and 2.
- Remove the four fairing bolts and sleeves arrowed in pictures 3, 4, 5 and 6.
- Gently pull the lower section of both fairings away from the motorcycle to disengage the location grommets.
- Offer the downpipe grille into position (ensuring not to damage and fairing panels) and secure using the two of the cable ties as shown in pictures 7, 8, 9 and 10 (do not fully tighten at this stage).



- Place the spacer onto the M5x20mm button head bolt as shown above.



- Place the bolt with spacer through the join of the lower fairings as shown in picture 11.
- Ensure the bolt goes through the lower mounting hole in the downpipe grille and secure using the washer and Nyloc nut (do not over-tighten the Nyloc nut will hold it tight) as shown in picture 12.
- Tighten the two upper cable ties.
- Refit the lower push rivet as shown in picture 2.
- Refit and tighten all fairing bolts and sleeves as original.

ISSUE 1 26/06/2018 (NSY)

CONSUMER NOTICE

The catalogue description and any exhibition of samples are only broad indications of the Products and R&G may make design changes which do not diminish their performance or visual appeal and supplying them in such state shall conform to the order. The Buyer acknowledges no representation or warranty (other than as to title) has been given or will apply to the Products other than those in R&G's order or confirmation and the Buyer confirms it has chosen the Products as being of merchantable quality and suitable for its particular purposes. Where R&G fits the Products or undertakes other services it shall exercise reasonable skill and care and rectify any fault free of charge unless the workmanship has been disturbed. The Buyer is responsible for ensuring that the warranty on the motorcycle is not affected by the fitting of the Products. On return of any defective Products R&G shall at its option either supply a replacement or refund the purchase money but shall not be liable if the Products have been modified or used or maintained otherwise than in accordance with R&G's or manufacturer's instructions and good engineering practice or if the defect arises from accident or neglect.

Other than identified above and subject to R&G not limiting its liability for causing death and personal injury, it shall not be liable for indirect or consequential loss and otherwise its liability shall be limited to the amounts paid by the Buyer for the Products or the fitting or service concerned. These terms do not affect the Buyer's statutory rights.

R&G RACING RETURNS POLICY (NON-FAULTY GOODS)

Returns must be pre-authorized (if not pre-authorized the return will be rejected). Goods may only be returned direct to us if they were purchased direct from us (customer must prove if necessary). Otherwise to be returned to original vendor. Goods must be in re-sellable condition, in the opinion of R&G Racing. All returns are subject to a 25% restocking and handling fee (25% of the gross value exc. P&P – at the prevailing price at time of purchase). The customer must pay any and all carriage charges. No returns of discontinued products, unless within 14 days of purchase. This policy does not affect your statutory rights and does not refer to faulty goods.

R&G

Unit 1, Shelley's Lane, East Worldham, Alton, Hampshire, GU34 3AQ
Tel: +44 (0)1420 89007 Fax: +44 (0)1420 87301 www.rg-racing.com Email: info@rg-racing.com



Notice de montage DG0029 Grille de collecteur d'échappement
KAWASAKI NINJA 125 2019-



Le kit doit contenir :

- 1 x Grille de collecteurs d'échappement (DG0029).**
- 1x M5 x 20mm Boulon.**
- 1x M5 Écrou.**
- 1x M5 Rondelle 16mm (diamètre).**
- 1x Entretoise (S1115).**
- 4x Colliers de serrage.**

Notice disponible au téléchargement sur www.rg-racing.com

VALEURS DE SERRAGE RECOMMANDEES

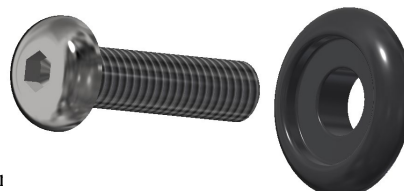
M4 BOULON = 8Nm
M5 BOULON = 12Nm
M6 BOULON = 15Nm
M8 BOULON = 20Nm
M10 BOULON = 40Nm

OUTILS REQUIS

- Clé à cliquet + douille 8mm.
- Clé Allen 3 & 4mm.
- Tournevis plat.

NOTICE DE MONTAGE

- Enlever les 2 rivets en utilisant un tournevis plat, voir photos 1 et 2.
- Enlever les 4 boulons de carénage et manchons, voir photos 3, 4, 5 et 6.
- Tirer la section inférieure des 2 carénages de la moto pour libérer les œillets de localisation.
- Monter la grille en position (Veiller à ne pas abîmer les carénages) et fixer en utilisant les 2 colliers de serrage, voir photos 7, 8, 9 et 10 (Ne pas serrer complètement à ce stade).



R&G



- Placer l'entretoise sur le boulon M5x20mm voir ci-dessus.
- Placer le boulon avec Entretoise dans le joint des carénages inférieurs, voir photo 11.
- Veiller à ce que le boulon se place dans le trou de fixation inférieur de la grille de protection puis fixer en utilisant la rondelle et l'écrou (Ne pas trop serrer, l'écrou fixe l'ensemble) voir photo 12.
- Serrer les 2 colliers de serrage supérieurs.
- Remonter le rivet inférieur, voir photo 2.
- Remonter et serrer tous les boulons et manchons comme à l'origine.

ISSUE 1 26/06/2018 (NSY)

CONSUMER NOTICE

The catalogue description and any exhibition of samples are only broad indications of the Products and R&G may make design changes which do not diminish their performance or visual appeal and supplying them in such state shall conform to the order. The Buyer acknowledges no representation or warranty (other than as to title) has been given or will apply to the Products other than those in R&G's order or confirmation and the Buyer confirms it has chosen the Products as being of merchantable quality and suitable for its particular purposes. Where R&G fits the Products or undertakes other services it shall exercise reasonable skill and care and rectify any fault free of charge unless the workmanship has been disturbed. The Buyer is responsible for ensuring that the warranty on the motorcycle is not affected by the fitting of the Products. On return of any defective Products R&G shall at its option either supply a replacement or refund the purchase money but shall not be liable if the Products have been modified or used or maintained otherwise than in accordance with R&G's or manufacturer's instructions and good engineering practice or if the defect arises from accident or neglect.

Other than identified above and subject to R&G not limiting its liability for causing death and personal injury, it shall not be liable for indirect or consequential loss and otherwise its liability shall be limited to the amounts paid by the Buyer for the Products or the fitting or service concerned. These terms do not affect the Buyer's statutory rights.

R&G RACING RETURNS POLICY (NON-FAULTY GOODS)

Returns must be pre-authorized (if not pre-authorized the return will be rejected). Goods may only be returned direct to us if they were purchased direct from us (customer must prove if necessary). Otherwise to be returned to original vendor. Goods must be in re-sellable condition, in the opinion of R&G Racing. All returns are subject to a 25% restocking and handling fee (25% of the gross value exc. P&P – at the prevailing price at time of purchase). The customer must pay any and all carriage charges. No returns of discontinued products, unless within 14 days of purchase. This policy does not affect your statutory rights and does not refer to faulty goods.

R&G

Unit 1, Shelley's Lane, East Worldham, Alton, Hampshire, GU34 3AQ

Tel: +44 (0)1420 89007 Fax: +44 (0)1420 87301 www.rg-racing.com Email: info@rg-racing.com



Montageanleitung für DG0029 Krümmerschutzgitter
KAWASAKI NINJA 125 2019-



Inhalt des Kits:

- 1x Krümmerschutzgitter (DG0029)
- 1x M5 x 20mm Inbusschraube
- 1x M5 selbstsichernde Mutter
- 1x M5 Unterlegscheibe 16mm (O/dia)
- 1x Distanzhalter (S1115)
- 4x Kabelbinder

Eine digitale Version dieser Montageanleitung kann auf folgender Seite heruntergeladen werden:

www.rg-racing.com

MAX. ANZUGSDREHMOMENTE:

- M4 SCHRAUBE = 8Nm
- M5 SCHRAUBE = 12Nm
- M6 SCHRAUBE = 15Nm
- M8 SCHRAUBE = 20Nm
- M10 SCHRAUBE = 40Nm

SIE BENÖTIGEN FOLGENDES WERKZEUG

- Steckschlüsselsatz mit 8 mm Steckschlüssel
 - 3 & 4mm Inbusschlüssel
 - Schraubenzieher

MONTAGEANLEITUNG

- Entfernen Sie die zwei Plastiknieten mit einem Schraubenzieher – siehe Abbildungen 1 und 2.
- Entfernen Sie die vier Verkleidungsschrauben, die in den Abbildungen 3, 4, 5 und 6 gekennzeichnet sind.
- Vorsichtig den unteren Teil beider Verkleidungen vom Motorrad wegziehen, um die Befestigungstüllen zu lösen.
- Das Krümmerschutzgitter in Position bringen (achten Sie darauf, dass die Verkleidungen nicht beschädigt werden) und mit den zwei Kabelbindern befestigen wie in den Abbildungen 7, 8, 9 und 10 abgebildet (zu diesem Zeitpunkt nicht festziehen).

R&G

Unit 1, Shelley's Lane, East Worldham, Alton, Hampshire, GU34 3AQ
Tel: +44 (0)1420 89007 Fax: +44 (0)1420 87301 www.rg-racing.com Email: info@rg-racing.com



DG0029



- Den Distanzhalter an der M5x20 mm Inbusschraube
- Die Schraube mit dem Distanzhalter durch die Verbindungsstelle der unteren Verkleidungen einführen – siehe Abbildung 11.
- Stellen Sie sicher, dass die Schraube durch die untere Montageöffnung im Krümmerschutzgitter eingeführt wird, dann mit der Unterlegscheibe und selbstsichernden Mutter befestigen (nicht überziehen, die selbstsichernde Mutter wird das festhalten) wie in Abbildung 12 abgebildet.
- Die zwei oberen Kabelbinder festziehen.
- Montieren Sie die untere Plastikniete wieder wie in Abbildung 2 abgebildet.
- Alle Schrauben montieren und befestigen wie ursprünglich wieder.

AUSGABE 1 26/06/2018 (NSY)

CONSUMER NOTICE

The catalogue description and any exhibition of samples are only broad indications of the Products and R&G may make design changes which do not diminish their performance or visual appeal and supplying them in such state shall conform to the order. The Buyer acknowledges no representation or warranty (other than as to title) has been given or will apply to the Products other than those in R&G's order or confirmation and the Buyer confirms it has chosen the Products as being of merchantable quality and suitable for its particular purposes. Where R&G fits the Products or undertakes other services it shall exercise reasonable skill and care and rectify any fault free of charge unless the workmanship has been disturbed. The Buyer is responsible for ensuring that the warranty on the motorcycle is not affected by the fitting of the Products. On return of any defective Products R&G shall at its option either supply a replacement or refund the purchase money but shall not be liable if the Products have been modified or used or maintained otherwise than in accordance with R&G's or manufacturer's instructions and good engineering practice or if the defect arises from accident or neglect.

Other than identified above and subject to R&G not limiting its liability for causing death and personal injury, it shall not be liable for indirect or consequential loss and otherwise its liability shall be limited to the amounts paid by the Buyer for the Products or the fitting or service concerned. These terms do not affect the Buyer's statutory rights.

R&G RACING RETURNS POLICY (NON-FAULTY GOODS)

Returns must be pre-authorised (if not pre-authorised the return will be rejected). Goods may only be returned direct to us if they were purchased direct from us (customer must prove if necessary). Otherwise to be returned to original vendor. Goods must be in re-sellable condition, in the opinion of R&G Racing. All returns are subject to a 25% restocking and handling fee (25% of the gross value exc. P&P – at the prevailing price at time of purchase). The customer must pay any and all carriage charges. No returns of discontinued products, unless within 14 days of purchase. This policy does not affect your statutory rights and does not refer to faulty goods.

R&G

Unit 1, Shelley's Lane, East Worldham, Alton, Hampshire, GU34 3AQ

Tel: +44 (0)1420 89007 Fax: +44 (0)1420 87301 www.rg-racing.com Email: info@rg-racing.com